

Step 1

Settings: First page after turning the ultrasound machine on.



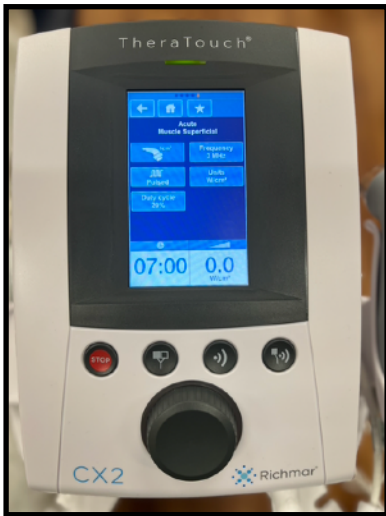
Step 2

Settings: Select based on treatment. (Clinical protocol were selected in step 1)



Step 3

Settings: Select based on treatment. (Acute was selected in step 2)



Step 4

Settings: Last step before treatment.



Step 5

Treatment area: Stay within 4x the size of the ERA



Step 6

Ultrasound gel: used to prevent air between transducer and skin.



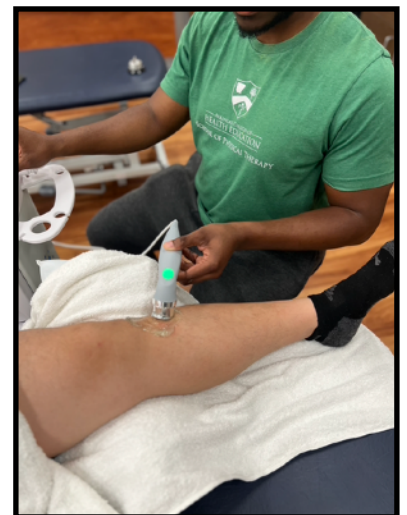
Step 7

Application: For patient comfort place gel on transducer and not patient.



Step 8

Power & Intensity: Turn up as needed for patient comfort.



Step 9

Transducer movement: Keep transducer moving to prevent "hotspots".